

**Section A-READING**

Read the given passage carefully and answer the following questions-(8)

For the mobility-impaired, highly trained canines called 'service-dogs' can pick up dropped keys, open and close drawers, retrieve prepared meals, help a person in and out of bathtub, dial 911, push and pull wheelchairs, help operate a car or van and pull off gloves, shoes, socks, and jackets, to summarise they are the multiple taskers. Other dogs provide specific assistance to those who suffer seizures (sudden attacks of illness) and require special medication. And, of course, the helping dogs provide companionship, play, and give unconditional love to the people they assist.

It is thirty odd years now since the placement of the first assistance dog. But only in recent years, with the rising independent movement among disabled people has the idea begun to spread widely. While most service-dogs are trained to work with people who rely on wheelchairs, other categories of helping dogs include hearing-dogs who alert their owners to sounds, such as doorbells, phones, cooking timers, alarm clocks, smoke alarms and seizure dogs which carry medication in their packs and are trained to dial 911 on large keypad phones.

1. How can we summarise the service dogs as? **2**
2. What made the assistance dogs become popular? **1**
3. What are the different categories of helping dogs? **1**
4. There is a difference between: **1**
  - (a) the service dogs and the helping dogs
  - (b) the serving dogs and canines
  - (c) the canines and ordinary dogs
  - (d) both (b) and (c) .
5. Give the noun form of 'trained': **1**
  - (a) train      (b) trains      (c) training      (d) trainee
6. Differentiate the hearing-dogs and the seizure-dogs. **2**

**SECTION-B CREATIVE WRITING**

- A. Write a letter to the Editor of the 'Times of India' regarding the frequent traffic jams on the roads of your city because of poor road conditions. **5**
- B. Yesterday it was your first day in your new school. You made new friends. Teachers were good to you, and you liked the infrastructure of the school. Write about your experiences and feelings about the new school in your diary. **5**

**SECTION-C GRAMMAR**

- A. Fill in the blanks with an appropriate tense form given in the bracket: - **4**
  - a. When I open my eyes, I \_\_\_\_\_ a strange sight. (Saw/was seeing/have been)
  - b. Every morning she \_\_\_\_\_ up early and gets ready for work. (Wakes/has woken)
  - c. We \_\_\_\_\_ Greece next month. (Visit/will visit/would visit/are visiting)
  - d. I \_\_\_\_\_ English for 12 years. (am teaching/have been teaching/will be teaching)

B. Choose the correct form of Verb in the following sentences taking the best option from the brackets: **4**

1. The quality of the apples (was/were/are/has) not good.
2. Justice, as well as mercy (allow/allowable/allows/allowing) it.
3. Neither the teacher nor the students (is/am/are/was) in the school.
4. Everyone ran as fast as he (can/could/may/will).

C. Rearrange the following into meaningful sentences: **4**

1. the owner / lives / is / in a large house / and / very rich
2. Some people / as it / travelling / them sea-sick / dislike / makes / by sea
3. to walk / a long way / is / ten miles
4. The Rose / And / Crown / High Street / situated / is / in / the

D. The following passage has not been edited. There is one error in each line. Write the incorrect word and the correction in your answer sheet. Underline your correction. **5**

It is on small matters the people passed judgement (a) \_\_\_\_\_  
upon ourselves and declared that we are (b) \_\_\_\_\_  
civilized or not. The great opportunities come rarely. (c) \_\_\_\_\_  
I hoped my friend will think on it. In that (d) \_\_\_\_\_  
case I thought we will be able to live more peacefully. (e) \_\_\_\_\_

E. Convert the following sentences into Indirect Speech: **3**

1. "Run away, children," said the mother.
2. I said to her, "Could you give me your notes?"
3. He said, "It may rain tonight."

### SECTION-D VOCABULARY

1. Write the synonyms (**ANY 3**) of the given words **3**

a. Abandon b. achieve c. Blend d. Conflict e. Flimsy f. Impatient

2. Write the antonyms (**ANY 3**) of the given words **3**

a. Humiliate b. Jubilant c. Mischievous d. Honest e. Gigantic

3. Read the following sentences and identify the **Literary devices** (figure of speech) used. **(6)**

1. The thief was as sly as a fox.
  2. The camel is the ship of the desert.
  3. What a piece of work is, man!
  4. Death touched Miss David with its icy fingers.
  5. Sheldon is a walking dictionary.
  6. Mr. Sharma thought the sweets were calling him.
-

निम्नलिखित गद्यांश को पढ़कर पूछे गए प्रश्नों का उत्तर दीजिए:-10

भारत में ऋतुओं से संबंध रखने वाले त्योहारों की कमी नहीं है। वसंत पंचमी, होली, श्रावण तीज, शरद पूर्णिमा लोहड़ी, पोगल, बैसाखी आदि त्योहार किसी-न-किसी रूप में सारे देश में मनाए जाते हैं। सभी जानते हैं कि इनका संबंध विशेष ऋतुओं से ही है। वसंत पंचमी और होली वसंती रंग और मस्ती के त्योहार हैं। श्रावण तीज मस्ती के प्रतीक झूलों का त्योहार है। शरद पूर्णिमा वर्षा ऋतुके बाज वायुमंडल और वातावरणको निर्मलता का संदेश देने वाला त्योहार है। लोहड़ी और पोगल शीत ऋतु को भरपूरता में बनाये जाने वाला त्योहार है। इसमें तिल, गुड, रेवड़ी, मूंगफली, घी-खिचड़ी आदि खाने की परंपरा है। वास्तव में यह सरदी से बचाव और स्वास्थ्य सुधार का उपाय है, यद्यपि कुछ धार्मिक आध्यात्मिक बातें, कथाएँ और परंपराएँ भी इनके साथ जुड़ गईं। बैसाखी गेहूँ की नयी फसल आने और ऋतु-परिवर्तन की सूचना देने वाला त्योहार है, जो पंजाब व हरियाणा जैसे कृषि-प्रधान प्रांतों में विशेष सज-धज तथा नृत्य गान की मस्ती के साथ मनाया जाता है। इस के आतिरिक्त भी लोग ऋतुओं से संबंधित स्थानीय स्तर के त्योहार मनाते हैं। सभी में मेल-मिलाप आनंद-मौज की प्रधानता रही है। इस प्रकार भारत में पारिवारिक, सामाजिक संबंधों का महत्व बताने वाले कुछ त्योहार भी बड़े, चाव बड़ी धूम-धाम से मनाए जाते हैं। रक्षाबंधन और भैयादूज यदि भाई-बहन के स्नेह को प्रकट करने वाले हैं तो करवा चौथ आदि पति-पत्नी के पवन संबंधों को महत्व देने वाला त्योहार है।

1. भारत में ऋतुओं से संबंध रखने वाले त्योहार कौन-कौन से हैं?
2. शरद पूर्णिमा का त्योहार क्या संदेश देता है?
3. कृषि प्रधान प्रांतों में कौन सा त्योहार मनाया जाता है?
4. भारत में पारिवारिक, सामाजिक संबंधों के महत्व को बताने वाले त्योहार कौन से हैं?
5. स्नेह प्रकट करने वाले व पवन संबंधों को बताने वाले किन-किन लोगों से संबंध रकते हैं?

लेखन

2. निम्नलिखित विषय पर 100 शब्दों में अनुच्छेद लिखिए:- 6

मनुष्य के जीवन में वनों का महत्व

3. निम्नलिखित विषय पर 80 शब्दों में पत्र लिखिए:- 6

आपके मित्र ने जन्म दिवस में दो पुस्तकें उपहार में भेजी हैं। आप उसका धन्यवाद देते हुए पत्र लिखिए।

### व्यारकण

4. दिए गए शब्दों की संधि विच्छेद कीजिए:- 4  
रत्नाकार, महात्मा, वार्तालाप, मानवोपयोगी,
5. निम्नलिखित वाक्यों में सही स्थानों पर विराम चिह्न लगाइए:- 4
1. सभापति महोदय मेरी बात सुनिए
  2. माता जी बोलीं मैं आप के साथ नहीं रहूँगी
  3. उसके पात्रों में दया क्षमा ममता और बलिदान की भावना है
  4. मेरी हिंदी की पुस्तक क्यों नहीं लाए
6. निम्नलिखित वाक्यों में से क्रियाविशेषण शब्द छाँट कर लिखिए:- 4
1. सुशील धीरे-धीरे मुस्कराने लगाय
  2. हरित की बहन बहुत सोती है।
  3. मछली धीरे-धीरे तैर रही है।
  4. प्रतिभा ज्यादा पढ़ती है।

### शब्द व वाक्य रचना

7. निम्नलिखित अनेक शब्दों के लिए एक शब्द दीजिए:- 4
1. जो देखने में प्रिय लगे।
  2. परोपकार करने वाला-
  3. जो बिना तिथि के आए-
  4. रात में घूमने वाला-
8. दिए गए मुहावरों को वाक्य में प्रयोग कीजिए:- 4
1. पेट में चूहे कूदना
  2. अक्ल का दुश्मन
  3. आग में घी डालना
  4. आकाश पताल एक करना
9. निम्नलिखित वाक्यों को शुद्ध कीजिए:- 4
1. वह शनिवार के दिन चला गया।
  2. मुझे आम का फल अच्छा लगता है।
  3. पतंग आकाश पर उड़ रही है।
  4. एक फूलों की माला ले आओ।
10. निम्नलिखित शब्दों के दो-दो पर्यायवाची शब्द लिखिए:- 4
- अहंकार, आभूषण, बगीचा, आकाश
-

**Section A(1 mark each)**

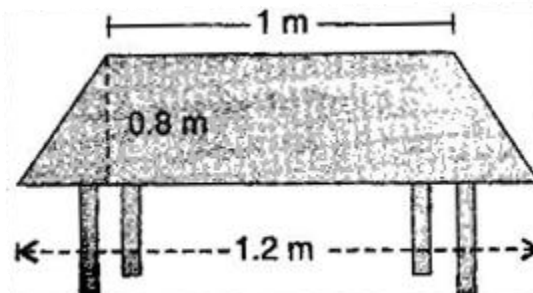
- Find the value of:  
(i)  $(-37)^2$                       (ii) Divide 25.75 by 25
- Find the cube of 0.12.
- Identify the like expressions.  
 $5x, -14x, 3x^2 + 1, x^2, -9x^2, xy, -3xy$
- Expand the following using exponent 0.0523
- Solve the equation:  $2x - 2 = 7$ .
- Convert 0.25 % to fractions and ratios.
- If each side of a cube is doubled, how many times will its surface area increase?
- Volume of a cylinder with base radius =  $r$  and height =  $h$ , is \_\_\_\_\_
- Find the range of the data: 6,14,20,16,6,5,4,18,25,15, and 5.
- Find the quotient obtained on dividing  $(x^2 - b)$  by  $-(x - a)$ .

**Section B (2 marks each)**

- Find the square roots of the following decimal numbers (i) 10020.01
- Find 16.5% of 5000 meter
- If the side of a square is doubled then how many times its area becomes?
- Expand.  
(i)  $(a + 6)^2$                       (ii)  $(2a-5)^2$
- Parikshit makes a cuboid of plasticine of sides 5 cm, 2 cm, 5 cm. How many such cuboids will he need to form a cube?

**Section C (3 mark each)**

- Multiply  $x^2 + 2y$  by  $x^3 - 2xy + y^3$  and find the value of the product for  $x = 1$  and  $y = -1$ .
- In a quadrilateral ABCD,  $\angle D$  is equal to  $150^\circ$  and  $\angle A = \angle B = \angle C$ . Find  $\angle A$ ,  $\angle B$  and  $\angle C$ .
- Find  $x$  if:  $(-5)^{x+1} \times (-5)^5 = (-5)^7$
- The shape of the top surface of a table is a trapezium. Find its area if its parallel sides are 1 m and 1.2 m and perpendicular distance between them is 0.8 m.



20. Simplify the following and write in exponential form.

(i)  $(3^6 \div 3^8)^4 \times 3^{-4}$

(ii)  $\frac{1}{27} \times 3^{-3}$

**Section D (4 mark each)**

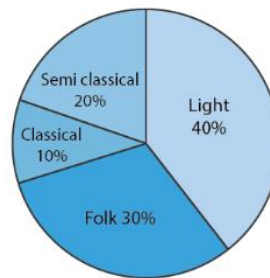
21. One side of a square field is 179 m. Find the cost of raising a lawn on the field at the rate of Rs 1.50 per square meter.

22. A survey was made to find the type of music that a certain group of young people liked in a city. The adjoining pie chart shows the findings of this survey. From this pie chart, answer the following:

(i) If 20 people liked classical music, how many young people were surveyed?

(ii) Which type of music is liked by the maximum number of people?

(iii) If a cassette company were to make 1000 CD's, how many of each type would they make?



23. If you have a spinning wheel with 3 green sectors, 1 blue sector and 1 red sector, what is the probability of getting a green sector? What is the probability of getting a non-blue sector?

\_\_\_\_\_

**Multiple Choice Questions:**

(15 × 1 = 15)

1	What is force? a) Pull b) Push c) Push and pull both d) None of these	1
2	Eardrum is a part of: a) sound producing organ b) skeletal system c) hearing organ d) reproductive organ	1
3	Combustion is a: a) Chemical process b) Physical process c) Both of these processes d) None of these processes	1
4	The liquid metal at the room temperature is: a) Mercury b) Bromine c) Sodium d) Gold	1
5	The powerhouse of a cell is called a) cell wall b) mitochondria c) ribosomes d) nucleus	1
6	Force of friction depends on : a) smoothness of surface b) roughness of surface c) inclination of surface d) all of the above	1
7	Which of these is a good conductor of electricity? a) Brick b) Steel c) Plastic d) Cotton	1
8	Yeast is used in the production of a) sugar b) alcohol c) hydrochloric acid d) oxygen	1
9	Band of seven colors is called a) VIBGYOR b) spectrum c) dispersion d) reflection	1
10	Leaves and fruits fall on the ground due to (a) Magnetic force (b) Gravitational force (c) Electrostatic force (d) Muscular force	1
11	Electroplating prevents a) corrosion b) passing of current c) dissociation d) shining	1
12	Tissue is a: a) group of organs b) group of cells c) group of tissues d) group of organisms	1
13	The most common carrier of communicable diseases is a) ant b) housefly c) dragonfly d) spider	1
14	The metals which can be cut with a knife: a) Sodium and potassium b) Barium and calcium c) Sodium and mercury d) Potassium and calcium	1
15	The functional unit of life is called: a) cell b) egg c) nucleus d) none of these	1

**Answer the following questions briefly.**

(5 × 3 = 15)

16. Define muscular force. Is it a contact or non-contact force? Give an example of a non-contact force.

17. When fuels burn, what do they produce? Name two liquid fuels.

18. Can you store lemon pickle in an aluminum utensil? Explain.

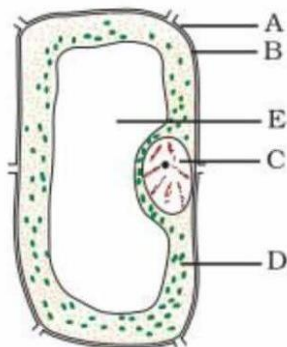
19. What are chloroplasts? Explain why chloroplasts are found only in plant cells?

20. State the laws of reflection (along with a labeled diagram) .

**Diagram based question**

(1 × 5 = 5)

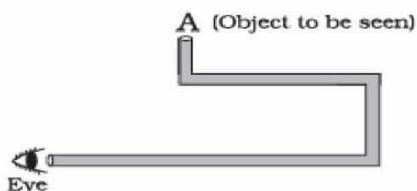
21. Name the figure and label any four parts from A to E in the given figure.



**Problem solving question.**

(1 × 5 = 5)

22. A student planned an activity to observe an object A through pipes as shown in the following figure so that he could see objects which he could not directly see.



- (a) How many mirrors should he use to see the objects?
- (b) Indicate the positions of the mirrors in the figure.
- (c) What must be the angle with respect to the incident light at which he should place the mirrors?
- (d) Indicate the direction of rays in the figure.
- (e) If any of the mirrors is removed, will he be able to see the objects?

**Reasoning Questions.**

(2 × 5 = 10)

- 23. a) Explain the term ductility, giving two examples. (3)
- b) Why are metals used in ringing bells? (2)
- 24. a) Name any two materials that can be used for electroplating. (2)
- b) Mention three applications of electroplating. (3)